





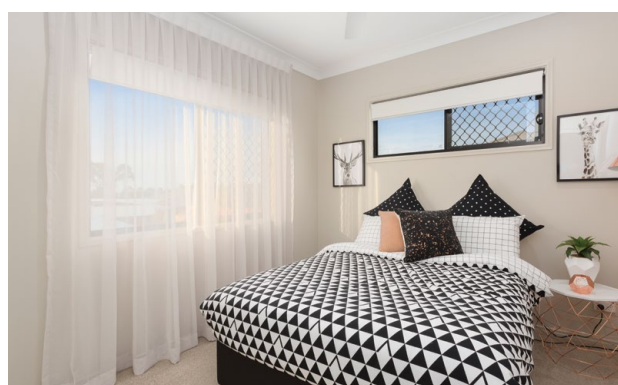


Whalan Mk.2 153 SQM

 x 4
  x 1
  x 1
  x 2

Small but stylish, the Whalan Mk. 2 153 packs a punch! Perfect for narrow blocks, this home provides plenty of options with the current lay-out featuring four bedrooms including a master suite with ensuite and walk-in-wardrobe.

- Friendly open plan living, dining and kitchen area with a breakfast bar
- Wide range of interior design finishes and options for every style and budget
- Suitable for narrow allotments



Indicative AusHomes interior only. May not be actual floor plan.



Whalan Mk.2 153 SQM



Floor Area

Porch	2.4m ²
Alfresco	15.1m ²
Living	135.8m ²
TOTAL	(16.5 sqs) 153.3m²



Licence No.: 77058

DISCLAIMER: All plans, drawings and artist impressions are copyrighted to Aushomes Pty Ltd, Underwood, Brisbane. Artist impression is for illustration purposes only and does not form part of any offer or contract on behalf of Aushomes Pty Ltd. Actual façade and/or floor plan may vary from brochure. You should always consult your contract documents for exact floor plan, elevations, and inclusions. Floor plan may not be to scale, please refer to your contract working drawings for scaled sizing. Photos are for illustration purposes only.

Let us build you a better **AusHome** today. 07 3809 5999 | www.aushomes.com.au



AusHomes
building better homes