

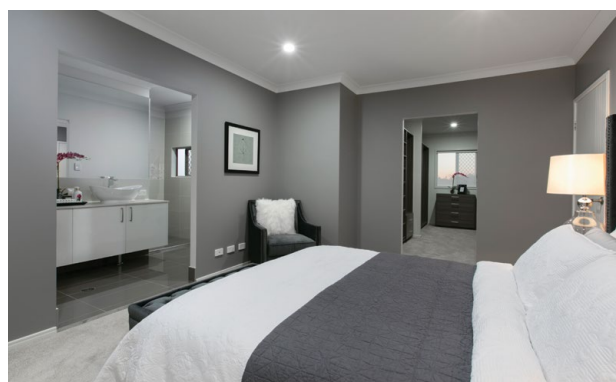


# Pacific Shanghai 251 SQM

 x 4  x 2  x 2  x 2.5

This large two-storey home offers a practical, zoned living solution perfect for growing families. Perfect for those who love to entertain, this home boasts two separate living areas and a contemporary kitchen with generous walk-in-pantry for budding master chefs!

- Executive master suite with impressive walk-in-wardrobe and ensuite
- Four generous bedrooms and three bathrooms
- Wide range of luxury finishes to make this home your own



Let us build you a better **AusHome** today. 07 3809 5999 | [www.aushomes.com.au](http://www.aushomes.com.au)



**AusHomes**  
building better homes

# Pacific Shanghai 251 SQM



## Floor Area

Porch	2.5m <sup>2</sup>
Alfresco	13.5m <sup>2</sup>
Living - Ground Floor (incl. Garage)	117.0m <sup>2</sup>
Living - First Floor	120.5m <sup>2</sup>
<b>TOTAL</b>	<b>(27.2 sqs) 253.5m<sup>2</sup></b>



DISCLAIMER: All plans, drawings and artist impressions are copyrighted to Aushomes Pty Ltd, Underwood, Brisbane. Artist impression is for illustration purposes only and does not form part of any offer or contract on behalf of Aushomes Pty Ltd. Actual façade and/or floor plan may vary from brochure. You should always consult your contract documents for exact floor plan, elevations, and inclusions. Floor plan may not be to scale, please refer to your contract working drawings for scaled sizing. Photos are for illustration purposes only.

Let us build you a better AusHome today. 07 3809 5999 | [www.aushomes.com.au](http://www.aushomes.com.au)



**AusHomes**  
building better homes