



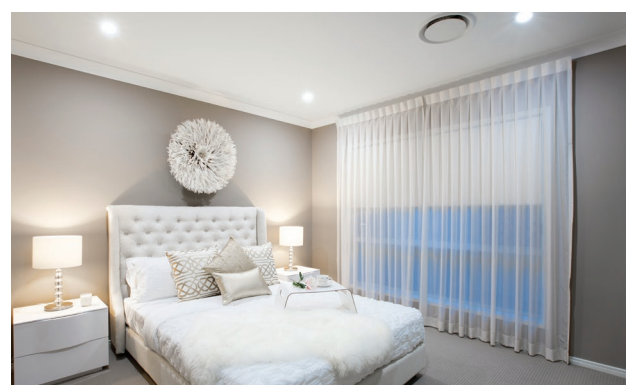
The Harvest 220 SQM



Indicative AusHomes interior only. May not be actual floor plan. An entertainer's dream, the heart of The Harvest 220 is the open plan kitchen, dining and family living area. With optional 4th bedroom or media room at the front of the house, this free flowing design gives you room to breathe and grow.



- Open plan living with integrated kitchen, dining and living areas
- Flexible floor plan of four bedrooms or three with a media room
- Conveniently placed study nook



Indicative AusHomes interior only. May not be actual floor plan.



The Harvest 220_{SQM}



Floor Area

Living (incl Garage)	205.72m ²
Porch	2.59m ²
Alfresco	12.26m ²
TOTAL	220.57m²



DISCLAIMER: All plans, drawings and artist impressions are copyrighted to Aushomes Pty Ltd, Underwood, Brisbane. Artist impression is for illustration purposes only and does not form part of any offer or contract on behalf of Aushomes Pty Ltd. Actual façade and/or floor plan may vary from brochure. You should always consult your contract documents for exact floor plan, elevations, and inclusions. Floor plan may not be to scale, please refer to your contract working drawings for scaled sizing. Photos are for illustration purposes only.

Let us build you a better AusHome today. 07 3809 5999 | www.aushomes.com.au



AusHomes
building better homes