


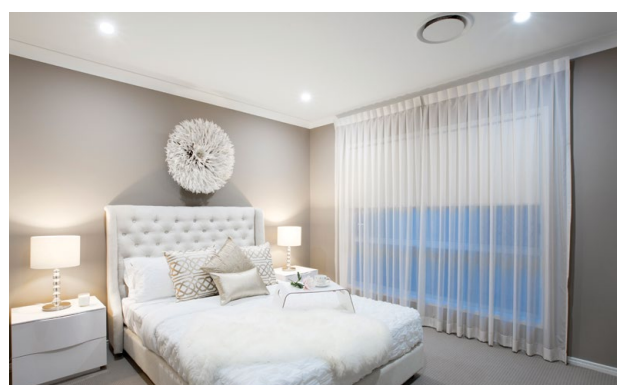


Palms 230_{SQM}

 x 4
  x 3
  x 2
  x 2

It's not difficult to see why the Palms 230 is one of AusHomes most popular designs. This four bedroom home includes a chef style kitchen with vaulted ceilings as well as three living areas and a covered alfresco area for entertaining.

- Zoned living to maximise privacy
- Suitable for zero allotment on a block with as little as a 15m frontage
- Four bedroom home with large family room, media room and office



Indicative AusHomes interior only. May not be actual floor plan.



Palms 230_{SQM}



Floor Area

Porch	3.7m ²
Alfresco	18.6m ²
Living (incl. Garage)	207.8m ²
TOTAL	(24.7 sqs) 230.1m²



DISCLAIMER: All plans, drawings and artist impressions are copyrighted to Aushomes Pty Ltd, Underwood, Brisbane. Artist impression is for illustration purposes only and does not form part of any offer or contract on behalf of Aushomes Pty Ltd. Actual façade and/or floor plan may vary from brochure. You should always consult your contract documents for exact floor plan, elevations, and inclusions. Floor plan may not be to scale, please refer to your contract working drawings for scaled sizing. Photos are for illustration purposes only.

Let us build you a better **AusHome** today. 07 3809 5999 | www.aushomes.com.au



AusHomes
building better homes